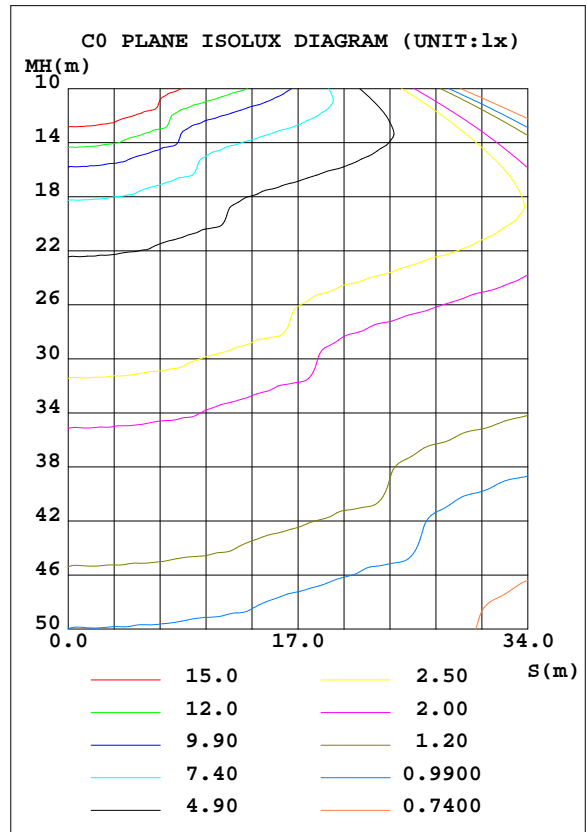
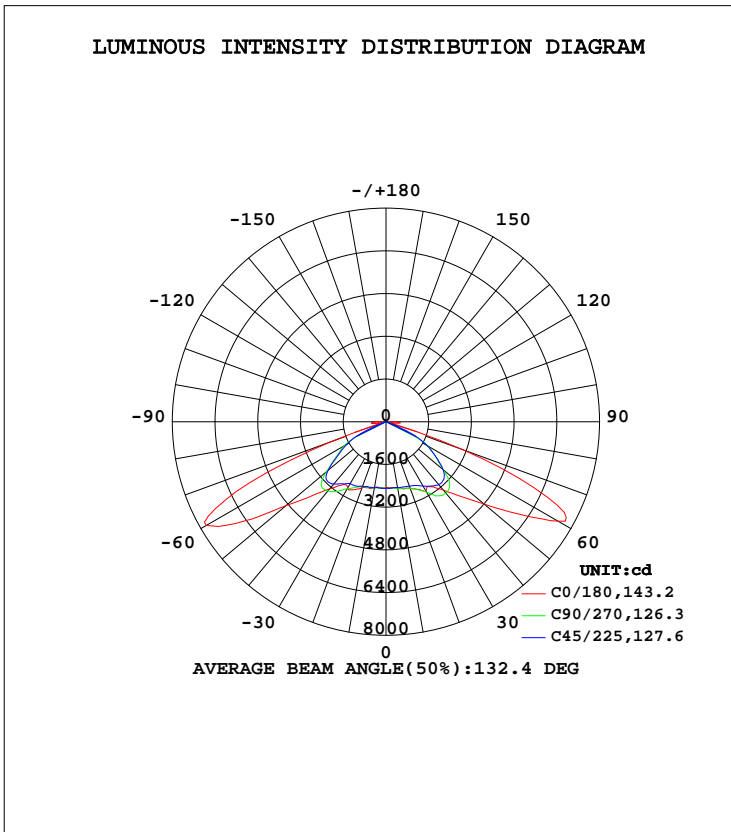


LUMINAIRE PHOTOMETRIC TEST REPORT

Test:U:219.5V I:0.6480A P:141.4W PF:0.9944 Freq:50.00Hz Lamp Flux:12313x1 lm		
NAME: LED High Bay Light(D2)	TYPE:LED	WEIGHT:N/A
SPEC.:N/A	DIM.: 0.397*0.411*0.096	SERIAL No.:1508260002
MFR.: Chengdu Senlu Electric Co., Ltd	SUR.:0.397*0.411	Shielding Angle:N/A

DATA OF LAMP		PHOTOMETRIC DATA				Eff: 87.06 lm/W
MODEL	SL150-L.D2-XY-110	Imax(cd)	7776	S/MH(C0/180)	2.82	
NOMINAL POWER(W)	150	LOR(%)	100.0	S/MH(C90/270)	1.80	
RATED VOLTAGE(V)	220.0	TOTAL FLUX(lm)	12314	η UP, DN(C0-180)	0.1,49.9	
NOMINAL FLUX(lm)	12313	CIE CLASS	DIRECT	η UP, DN(C180-360)	0.1,49.9	
LAMPS INSIDE	1	η up(%)	0.2	CIBSE SHR NOM	1.50	
TEST VOLTAGE(V)	220	η down(%)	99.8	CIBSE SHR MAX	1.55	



C Range: 0 - 360DEG
 C Interval: 22.5DEG
 Test Speed: HIGH
 Temperature:25.2DEG
 Operators:Teddy
 Test Date:2015-08-26

γ Range: 0 - 180DEG
 γ Interval: 1.0DEG
 Test System:EVERFINE GO-R5000_V2 SYSTEM V2.0.352
 Humidity:65%
 Test Distance:26.000m [K=1.2918]
 Remarks: N/A

ZONAL FLUX DIAGRAM

ZONAL FLUX DIAGRAM:

γ	C0	C45	C90	C135	C180	C225	C270	C315	γ	Φ zone	Φ total	%lum,lamp
10	2524	2506	2537	2576	2490	2511	2511	2519	0- 10	239.0	239.0	1.94,1.94
20	2657	2569	2655	2690	2633	2572	2585	2616	10- 20	731.2	970.2	7.88,7.88
30	2994	2782	3054	2912	2871	2685	2893	2897	20- 30	1276	2246	18.2,18.2
40	3336	3069	3489	3199	3282	3042	3382	3174	30- 40	1918	4165	33.8,33.8
50	4783	2792	2804	2907	4894	2834	2896	3080	40- 50	2618	6783	55.1,55.1
60	7453	1765	1816	1894	7776	1707	1825	1974	50- 60	2996	9779	79.4,79.4
70	3055	186.6	109.8	110.0	2235	130.2	103.8	203.8	60- 70	2193	11973	97.2,97.2
80	278.6	67.89	80.96	59.98	366.7	65.62	79.45	61.91	70- 80	201.9	12175	98.9,98.9
90	191.4	30.62	7.190	9.208	32.43	15.39	7.296	22.60	80- 90	109.6	12284	99.8,99.8
100	1.944	0.5369	0.5185	0.4275	5.868	1.245	1.321	2.046	90-100	3.700	12288	99.8,99.8
110	6.849	0.9954	1.124	1.980	11.27	4.363	3.707	4.602	100-110	3.296	12291	99.8,99.8
120	9.064	3.107	2.570	3.404	10.94	6.166	5.653	6.231	110-120	5.074	12296	99.9,99.9
130	9.307	4.130	5.006	4.656	7.865	5.688	6.276	5.364	120-130	5.541	12302	99.9,99.9
140	6.604	4.348	6.722	4.790	5.377	6.096	6.019	5.181	130-140	4.647	12307	99.9,99.9
150	5.107	6.712	5.963	4.346	5.036	5.350	5.827	5.390	140-150	3.453	12310	100,100
160	4.333	5.977	4.668	4.216	4.317	5.038	4.378	5.184	150-160	2.278	12312	100,100
170	4.399	4.696	4.953	4.598	4.440	5.190	4.349	5.584	160-170	1.327	12314	100,100
180	5.040	7.339	5.393	5.043	4.471	5.226	4.773	5.237	170-180	0.4875	12314	100,100
DEG	LUMINOUS INTENSITY:cd									UNIT:lm		

Conical surface Flux(90deg): 5401.5 lm

%lum = 43.9%

%lamp = 43.9%

Conical surface Flux(120deg): 9779.4 lm

%lum = 79.4%

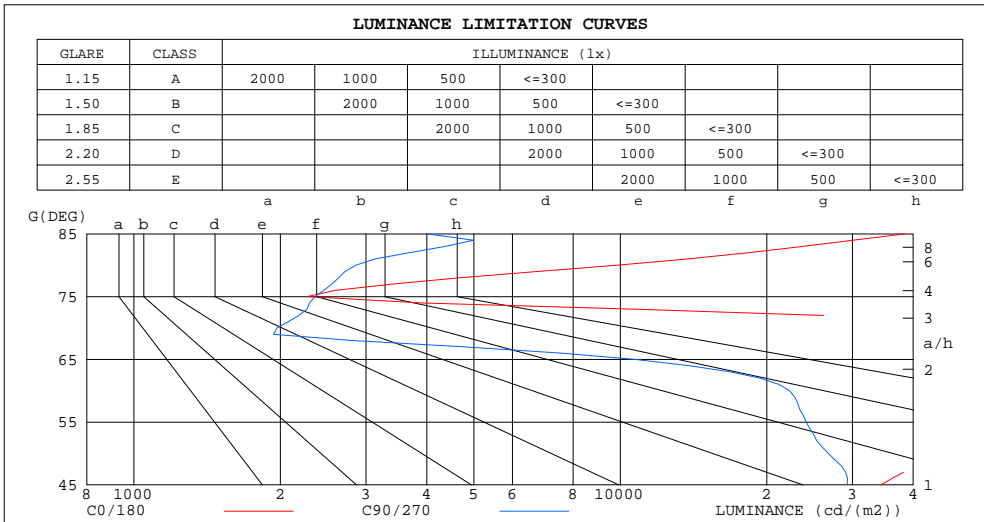
%lamp = 79.4%

C Range: 0 - 360DEG
 C Interval: 22.5DEG
 Test Speed: HIGH
 Temperature:25.2DEG
 Operators:Teddy
 Test Date:2015-08-26

γ Range: 0 - 180DEG
 γ Interval: 1.0DEG
 Test System:EVERFINE GO-R5000_V2 SYSTEM V2.0.352
 Humidity:65%
 Test Distance:26.000m [K=1.2918]
 Remarks: N/A

LUMINANCE LIMITATION CURVES

Test:U:219.5V I:0.6480A P:141.4W PF:0.9944 Freq:50.00Hz Lamp Flux:12313x1 lm		
NAME: LED High Bay Light(D2)	TYPE:LED	WEIGHT:N/A
SPEC.:N/A	DIM.: 0.397*0.411*0.096	SERIAL No.:1508260002
MFR.: Chengdu Senlu Electric Co., Ltd	SUR.:0.397*0.411	Shielding Angle:N/A



GLARE	CLASS	ILLUMINANCE (lx)							
		a	b	c	d	e	f	g	h
1.15	A	2000	1000	500	<=300				
1.50	B		2000	1000	500	<=300			
1.85	C			2000	1000	500	<=300		
2.20	D				2000	1000	500	<=300	
2.55	E					2000	1000	500	<=300

LUMINANCE cd/(m2)		
G(DEG)	C0/180	C90/270
85	38511	3994
80	9841	2860
75	2270	2357
70	54796	1969
65	96416	10681
60	91448	22276
55	64171	24111
50	45655	26762
45	34319	29271

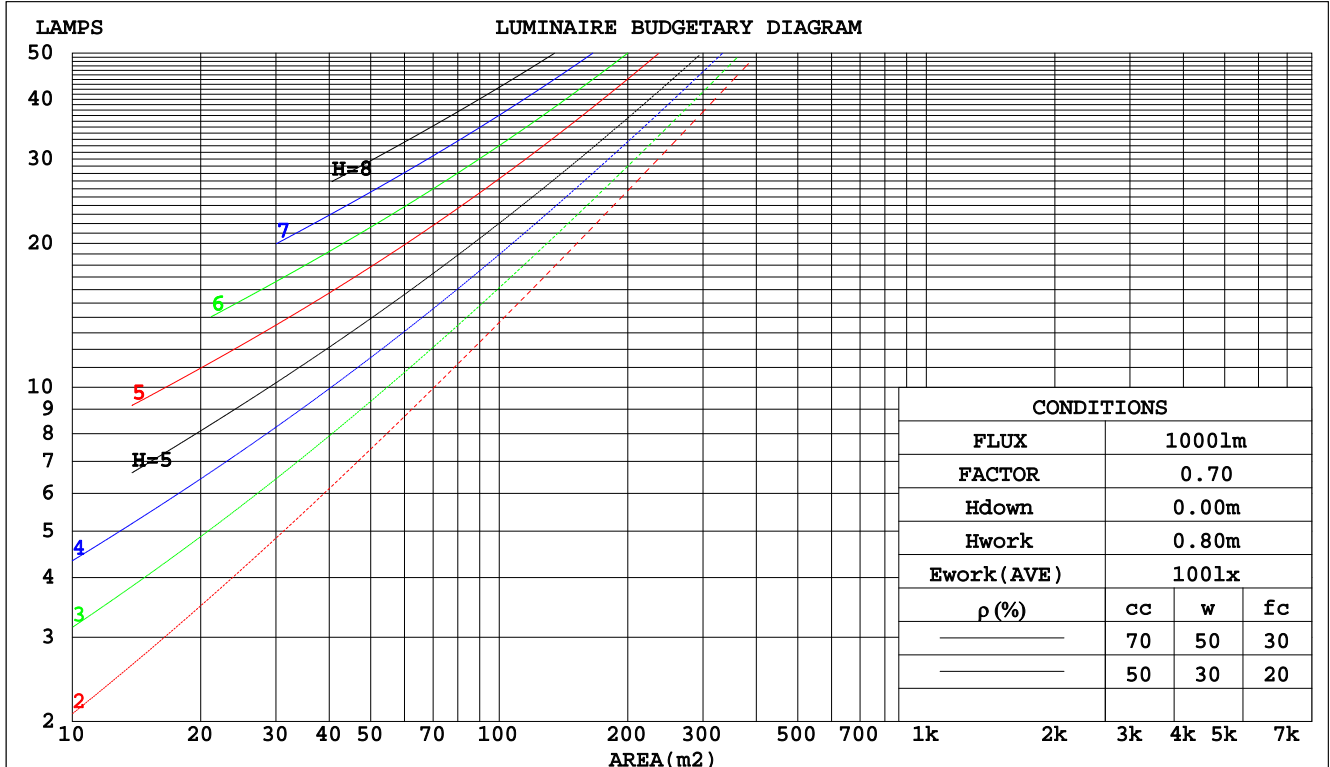
C Range: 0 - 360DEG
 C Interval: 22.5DEG
 Test Speed: HIGH
 Temperature:25.2DEG
 Operators:Teddy
 Test Date:2015-08-26

γ Range: 0 - 180DEG
 γ Interval: 1.0DEG
 Test System:EVERFINE GO-R5000_V2 SYSTEM V2.0.352
 Humidity:65%
 Test Distance:26.000m [K=1.2918]
 Remarks: N/A

CU AND LUMINAIRE BUDGETARY ESTIMATE DIAGRAM

Test:U:219.5V I:0.6480A P:141.4W PF:0.9944 Freq:50.00Hz Lamp Flux:12313x1 lm		
NAME: LED High Bay Light(D2)	TYPE:LED	WEIGHT:N/A
SPEC.:N/A	DIM.: 0.397*0.411*0.096	SERIAL No.:1508260002
MFR.: Chengdu Senlu Electric Co., Ltd	SUR.:0.397*0.411	Shielding Angle:N/A

pcc	80%			70%			50%			30%			10%			0
	50%	30%	10%	50%	30%	10%	50%	30%	10%	50%	30%	10%	50%	30%	10%	
pw																
pfc																
RCR	RCR:Room Cavity Ratio															
	Coefficients of Utilization(CU)															
0.0	1.19	1.19	1.19	1.16	1.16	1.16	1.11	1.11	1.11	1.06	1.06	1.06	1.02	1.02	1.02	.00
1.0	1.04	1.00	.96	1.02	.98	.95	.98	.95	.92	.94	.91	.89	.90	.88	.86	.84
2.0	.90	.83	.77	.88	.82	.76	.85	.79	.75	.81	.77	.73	.78	.74	.71	.69
3.0	.78	.69	.63	.76	.68	.62	.73	.66	.61	.70	.65	.60	.68	.63	.59	.56
4.0	.68	.59	.51	.66	.58	.51	.64	.56	.50	.61	.55	.50	.59	.53	.49	.47
5.0	.59	.50	.43	.58	.49	.43	.56	.48	.42	.54	.47	.42	.52	.46	.41	.39
6.0	.53	.43	.36	.52	.43	.36	.50	.42	.36	.48	.41	.35	.46	.40	.35	.33
7.0	.47	.38	.31	.46	.37	.31	.44	.36	.31	.43	.36	.30	.42	.35	.30	.28
8.0	.42	.33	.27	.42	.33	.27	.40	.32	.27	.39	.32	.26	.38	.31	.26	.24
9.0	.38	.30	.24	.38	.29	.24	.36	.29	.23	.35	.28	.23	.34	.28	.23	.21
10.0	.35	.27	.21	.34	.26	.21	.33	.26	.21	.32	.26	.21	.31	.25	.21	.19



C Range: 0 - 360DEG
 C Interval: 22.5DEG
 Test Speed: HIGH
 Temperature:25.2DEG
 Operators:Teddy
 Test Date:2015-08-26

γ Range: 0 - 180DEG
 γ Interval: 1.0DEG
 Test System:EVERFINE GO-R5000_V2 SYSTEM V2.0.352
 Humidity:65%
 Test Distance:26.000m [K=1.2918]
 Remarks: N/A

WEC AND CCEC

Test:U:219.5V I:0.6480A P:141.4W PF:0.9944 Freq:50.00Hz Lamp Flux:12313x1 lm		
NAME: LED High Bay Light(D2)	TYPE:LED	WEIGHT:N/A
SPEC.:N/A	DIM.: 0.397*0.411*0.096	SERIAL No.:1508260002
MFR.: Chengdu Senlu Electric Co., Ltd	SUR.:0.397*0.411	Shielding Angle:N/A

ρ_{cc}	80%			70%			50%			30%			10%			0
ρ_w	50%	30%	10%	50%	30%	10%	50%	30%	10%	50%	30%	10%	50%	30%	10%	0
ρ_{fc}	20%			20%			20%			20%			20%			0
RCR	RCR:Room Cavity Ratio						Wall Exitance Coefficients(WEC)									
0.0																
1.0	.301	.171	.054	.294	.168	.053	.281	.161	.051	.268	.155	.050	.257	.149	.048	
2.0	.295	.162	.050	.288	.159	.049	.277	.154	.048	.266	.149	.047	.256	.145	.046	
3.0	.279	.149	.044	.273	.146	.044	.263	.142	.043	.253	.139	.043	.244	.135	.042	
4.0	.261	.136	.040	.256	.134	.040	.246	.131	.039	.238	.128	.039	.230	.125	.038	
5.0	.243	.124	.036	.238	.122	.036	.230	.120	.035	.222	.117	.035	.215	.115	.034	
6.0	.226	.113	.032	.222	.112	.032	.214	.110	.032	.207	.108	.032	.201	.106	.031	
7.0	.210	.104	.029	.207	.103	.029	.200	.101	.029	.194	.099	.029	.188	.098	.029	
8.0	.196	.096	.027	.193	.095	.027	.187	.093	.027	.181	.092	.027	.176	.090	.026	
9.0	.184	.089	.025	.181	.088	.025	.175	.087	.025	.170	.085	.024	.165	.084	.024	
10.0	.172	.083	.023	.170	.082	.023	.165	.081	.023	.160	.080	.023	.156	.078	.022	

ρ_{cc}	80%			70%			50%			30%			10%			0
ρ_w	50%	30%	10%	50%	30%	10%	50%	30%	10%	50%	30%	10%	50%	30%	10%	0
ρ_{fc}	20%			20%			20%			20%			20%			0
RCR	RCR:Room Cavity Ratio						Ceiling Cavity Exitance Coefficients(CCEC)									
0.0	.192	.192	.192	.164	.164	.164	.112	.112	.112	.064	.064	.064	.021	.021	.021	
1.0	.182	.158	.137	.155	.136	.118	.106	.093	.082	.061	.054	.047	.020	.017	.015	
2.0	.175	.134	.100	.149	.115	.086	.102	.080	.060	.059	.046	.035	.019	.015	.011	
3.0	.168	.116	.075	.144	.100	.065	.099	.070	.046	.057	.041	.027	.018	.013	.009	
4.0	.162	.103	.058	.139	.089	.051	.095	.062	.036	.055	.036	.021	.018	.012	.007	
5.0	.155	.093	.047	.133	.080	.041	.092	.056	.029	.053	.033	.017	.017	.011	.006	
6.0	.148	.085	.039	.127	.073	.034	.088	.051	.024	.051	.030	.014	.016	.010	.005	
7.0	.142	.078	.034	.122	.068	.029	.084	.047	.021	.049	.028	.012	.016	.009	.004	
8.0	.135	.072	.029	.116	.063	.026	.081	.044	.018	.047	.026	.011	.015	.009	.004	
9.0	.129	.068	.026	.111	.059	.023	.077	.041	.016	.045	.024	.010	.015	.008	.003	
10.0	.123	.063	.023	.106	.055	.020	.074	.039	.015	.043	.023	.009	.014	.008	.003	

C Range: 0 - 360DEG
 C Interval: 22.5DEG
 Test Speed: HIGH
 Temperature:25.2DEG
 Operators:Teddy
 Test Date:2015-08-26

γ Range: 0 - 180DEG
 γ Interval: 1.0DEG
 Test System:EVERFINE GO-R5000_V2 SYSTEM V2.0.352
 Humidity:65%
 Test Distance:26.000m [K=1.2918]
 Remarks: N/A

UGR(Unified Glare Rating) Table

Test:U:219.5V I:0.6480A P:141.4W PF:0.9944 Freq:50.00Hz Lamp Flux:12313x1 lm										
NAME: LED High Bay Light(D2)					TYPE:LED			WEIGHT:N/A		
SPEC.:N/A					DIM.: 0.397*0.411*0.096			SERIAL No.:1508260002		
MFR.: Chengdu Senlu Electric Co., Ltd					SUR.:0.397*0.411			Shielding Angle:N/A		
ceiling/cavity	0.7	0.7	0.5	0.5	0.3	0.7	0.7	0.5	0.5	0.3
walls	0.5	0.3	0.5	0.3	0.3	0.5	0.3	0.5	0.3	0.3
working plane	0.2	0.2	0.2	0.2	0.2	0.2	0.2	0.2	0.2	0.2
Room dimensions	Viewed crosswise					Viewed endwise				
x = 2H y = 2H	21.2	22.8	21.5	23.0	23.3	14.7	16.4	15.0	16.6	16.8
3H	23.0	24.5	23.3	24.8	25.0	14.7	16.2	15.0	16.4	16.7
4H	22.9	24.3	23.3	24.6	24.9	14.6	16.0	14.9	16.2	16.5
6H	22.8	24.2	23.2	24.4	24.7	14.5	15.8	14.8	16.1	16.4
8H	22.8	24.1	23.2	24.4	24.7	14.5	15.7	14.8	16.0	16.3
12H	22.9	24.1	23.2	24.4	24.7	14.4	15.7	14.8	16.0	16.3
4H 2H	21.1	22.5	21.4	22.8	23.0	15.6	17.0	15.9	17.3	17.5
3H	22.9	24.1	23.3	24.4	24.7	15.5	16.7	15.8	17.0	17.3
4H	22.8	23.9	23.2	24.2	24.6	15.4	16.5	15.8	16.8	17.2
6H	22.7	23.7	23.1	24.1	24.4	15.4	16.3	15.8	16.7	17.1
8H	22.7	23.6	23.2	24.0	24.4	15.3	16.3	15.8	16.6	17.0
12H	22.9	23.7	23.3	24.1	24.5	15.4	16.2	15.8	16.6	17.0
8H 4H	22.7	23.6	23.1	24.0	24.3	15.4	16.3	15.8	16.7	17.1
6H	22.6	23.4	23.1	23.8	24.2	15.4	16.1	15.9	16.6	17.0
8H	22.6	23.3	23.1	23.7	24.2	15.4	16.1	15.9	16.5	17.0
12H	22.8	23.3	23.3	23.8	24.3	15.5	16.0	15.9	16.5	16.9
12H 4H	22.6	23.5	23.1	23.9	24.3	15.4	16.2	15.8	16.6	17.0
6H	22.6	23.2	23.0	23.7	24.1	15.4	16.0	15.8	16.5	16.9
8H	22.6	23.2	23.1	23.6	24.1	15.4	16.0	15.9	16.4	16.9
Variations with the observer position at spacings:										
S = 1.0H	+ 0.4 / - 0.4					+ 0.7 / - 1.0				
1.5H	+ 1.7 / - 1.5					+ 0.7 / - 1.0				
2.0H	+ 3.9 / - 5.7					+ 1.4 / - 2.1				

CIE Pub.117, 12313 lm Total Lamp Luminous Flux Correct ($8\log(F/F_0) = 8.7$)

C Range: 0 - 360DEG
C Interval: 22.5DEG
Test Speed: HIGH
Temperature:25.2DEG
Operators:Teddy
Test Date:2015-08-26

γ Range: 0 - 180DEG
 γ Interval: 1.0DEG
Test System:EVERFINE GO-R5000_V2 SYSTEM V2.0.352
Humidity:65%
Test Distance:26.000m [K=1.2918]
Remarks: N/A

UTILIZATION FACTORS TABLE

Test:U:219.5V I:0.6480A P:141.4W PF:0.9944 Freq:50.00Hz Lamp Flux:12313x1 lm		
NAME: LED High Bay Light(D2)	TYPE:LED	WEIGHT:N/A
SPEC.:N/A	DIM.: 0.397*0.411*0.096	SERIAL No.:1508260002
MFR.: Chengdu Senlu Electric Co., Ltd	SUR.:0.397*0.411	Shielding Angle:N/A

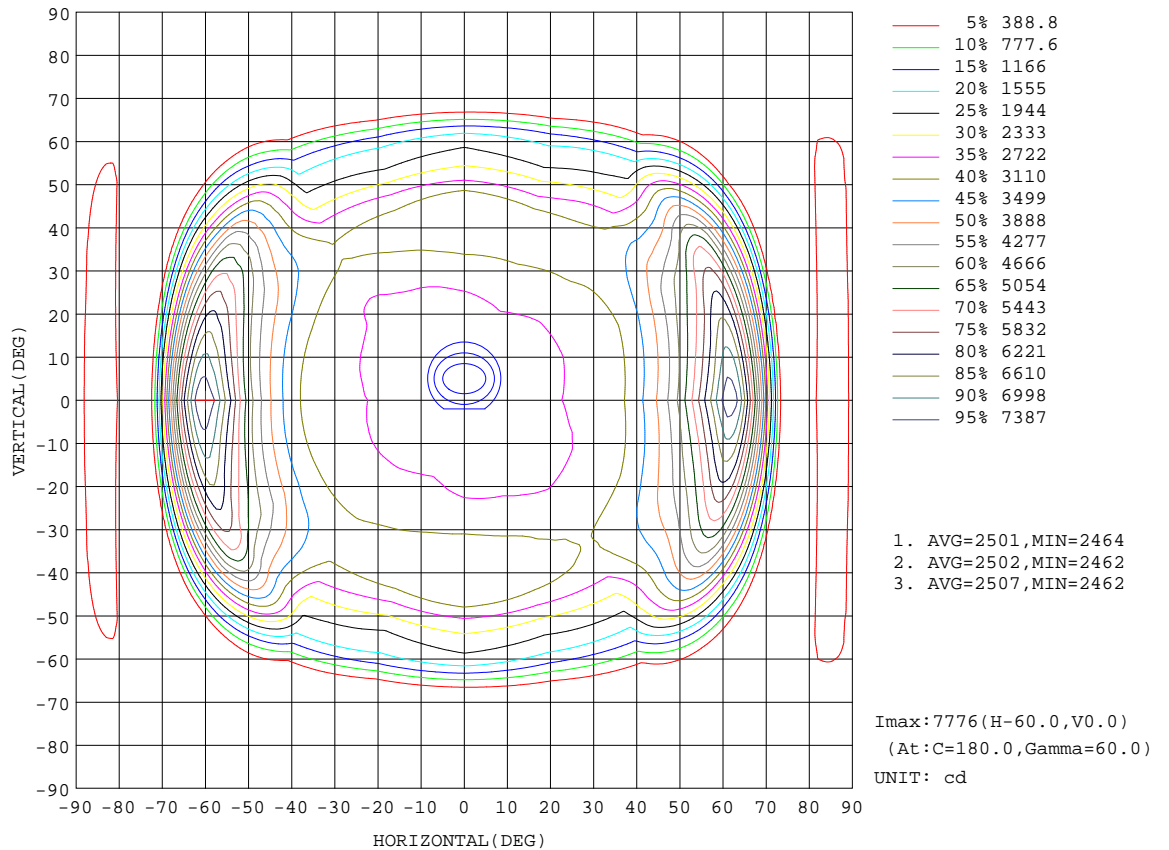
REFLECTANCE										
Ceiling	0.8	0.8	0.8	0.7	0.7	0.7	0.5	0.5	0.5	0
Walls	0.7	0.5	0.3	0.7	0.5	0.3	0.7	0.5	0.3	0
Working plane	0.2	0.2	0.2	0.2	0.2	0.2	0.2	0.2	0.2	0
ROOM INDEX	UTILIZATION FACTORS(PERCENT) $k(RI) \times RCR = 5$									
k = 0.60	50	37	29	49	37	29	48	36	29	22
0.80	61	49	40	60	48	40	58	47	40	32
1.00	72	59	51	70	59	51	68	60	51	43
1.25	80	68	61	78	68	60	75	66	59	52
1.50	85	75	67	84	74	67	81	72	66	58
2.00	94	85	78	92	83	77	88	81	76	67
2.50	98	90	84	96	89	83	92	86	81	72
3.00	102	95	89	100	93	88	95	90	86	77
4.00	106	100	96	104	99	94	99	95	92	83
5.00	109	104	100	106	102	98	102	98	95	86
ROOM INDEX	UF(total)									Direct
According to DIN EN 13032-2 2004			Suspended				SHRNOM = 1.25			

C Range: 0 - 360DEG
 C Interval: 22.5DEG
 Test Speed: HIGH
 Temperature:25.2DEG
 Operators:Teddy
 Test Date:2015-08-26

γ Range: 0 - 180DEG
 γ Interval: 1.0DEG
 Test System:EVERFINE GO-R5000_V2 SYSTEM V2.0.352
 Humidity:65%
 Test Distance:26.000m [K=1.2918]
 Remarks: N/A

ISOCANDELA DIAGRAM

Test:U:219.5V I:0.6480A P:141.4W PF:0.9944 Freq:50.00Hz Lamp Flux:12313x1 lm		
NAME: LED High Bay Light(D2)	TYPE:LED	WEIGHT:N/A
SPEC.:N/A	DIM.: 0.397*0.411*0.096	SERIAL No.:1508260002
MFR.: Chengdu Senlu Electric Co., Ltd	SUR.:0.397*0.411	Shielding Angle:N/A

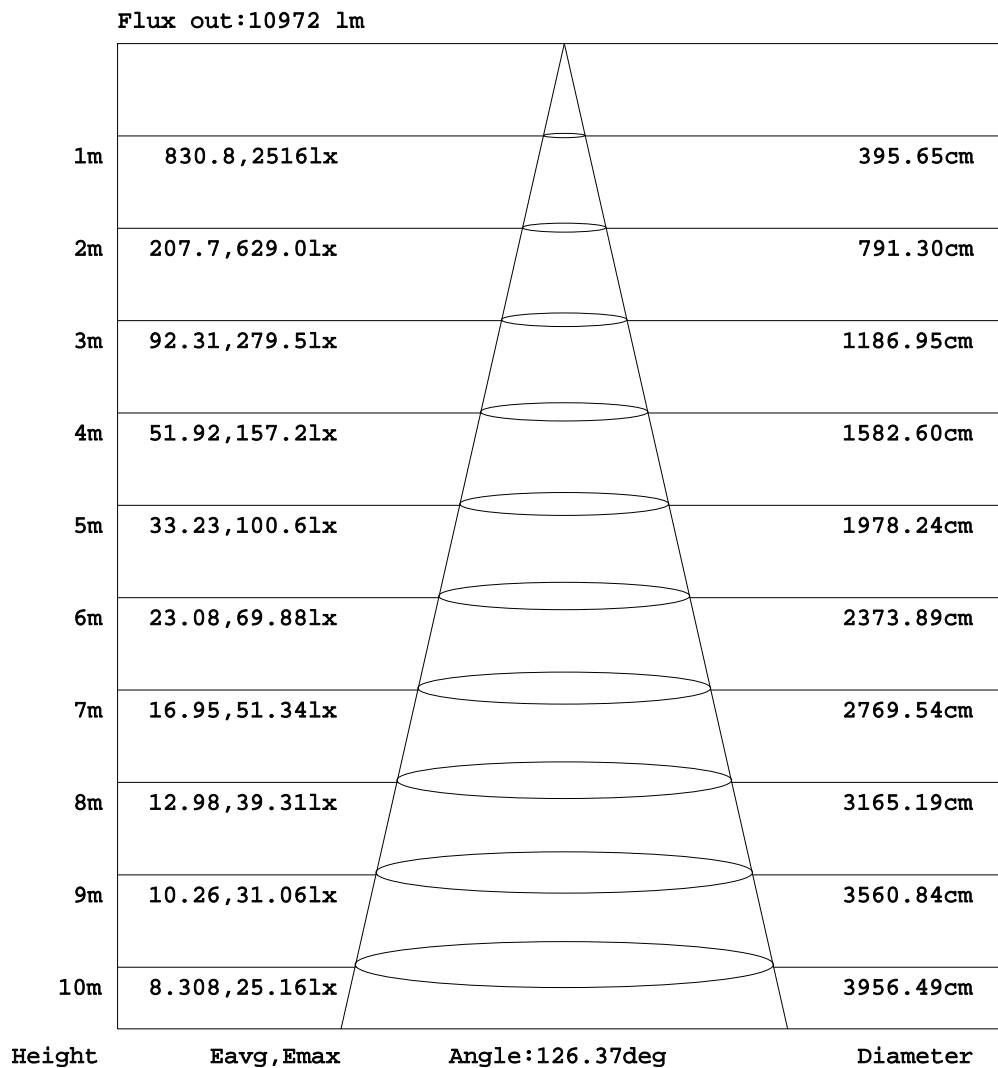


C Range: 0 - 360DEG
 C Interval: 22.5DEG
 Test Speed: HIGH
 Temperature:25.2DEG
 Operators:Teddy
 Test Date:2015-08-26

γ Range: 0 - 180DEG
 γ Interval: 1.0DEG
 Test System:EVERFINE GO-R5000_V2 SYSTEM V2.0.352
 Humidity:65%
 Test Distance:26.000m [K=1.2918]
 Remarks: N/A

AAI Figure

Test:U:219.5V I:0.6480A P:141.4W PF:0.9944 Freq:50.00Hz Lamp Flux:12313x1 lm		
NAME: LED High Bay Light(D2)	TYPE:LED	WEIGHT:N/A
SPEC.:N/A	DIM.: 0.397*0.411*0.096	SERIAL No.:1508260002
MFR.: Chengdu Senlu Electric Co., Ltd	SUR.:0.397*0.411	Shielding Angle:N/A



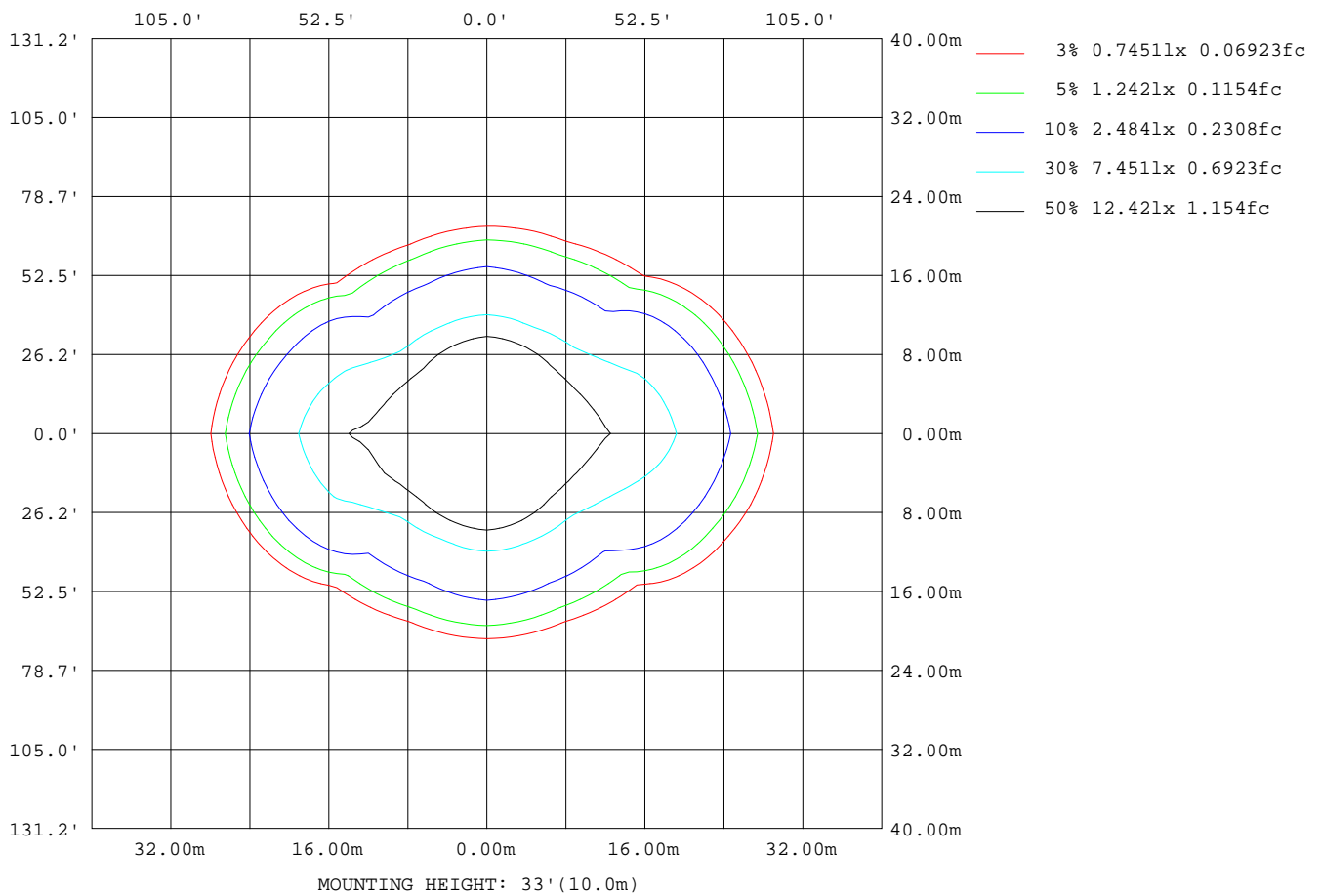
Note:The Curves indicate the illuminated area and the average illumination when the luminaire is at different distance.

C Range: 0 - 360DEG
 C Interval: 22.5DEG
 Test Speed: HIGH
 Temperature:25.2DEG
 Operators:Teddy
 Test Date:2015-08-26

γ Range: 0 - 180DEG
 γ Interval: 1.0DEG
 Test System:EVERFINE GO-R5000_V2 SYSTEM V2.0.352
 Humidity:65%
 Test Distance:26.000m [K=1.2918]
 Remarks: N/A

ISOLUX DIAGRAM

Test:U:219.5V I:0.6480A P:141.4W PF:0.9944 Freq:50.00Hz Lamp Flux:12313x1 lm		
NAME: LED High Bay Light(D2)	TYPE:LED	WEIGHT:N/A
SPEC.:N/A	DIM.: 0.397*0.411*0.096	SERIAL No.:1508260002
MFR.: Chengdu Senlu Electric Co., Ltd	SUR.:0.397*0.411	Shielding Angle:N/A



C Range: 0 - 360DEG
 C Interval: 22.5DEG
 Test Speed: HIGH
 Temperature:25.2DEG
 Operators:Teddy
 Test Date:2015-08-26

γ Range: 0 - 180DEG
 γ Interval: 1.0DEG
 Test System:EVERFINE GO-R5000_V2 SYSTEM V2.0.352
 Humidity:65%
 Test Distance:26.000m [K=1.2918]
 Remarks: N/A

LED Avg.L Report

Test:U:219.5V I:0.6480A P:141.4W PF:0.9944 Freq:50.00Hz Lamp Flux:12313x1 lm		
NAME: LED High Bay Light(D2)	TYPE:LED	WEIGHT:N/A
SPEC.:N/A	DIM.: 0.397*0.411*0.096	SERIAL No.:1508260002
MFR.: Chengdu Senlu Electric Co., Ltd	SUR.:0.397*0.411	Shielding Angle:N/A

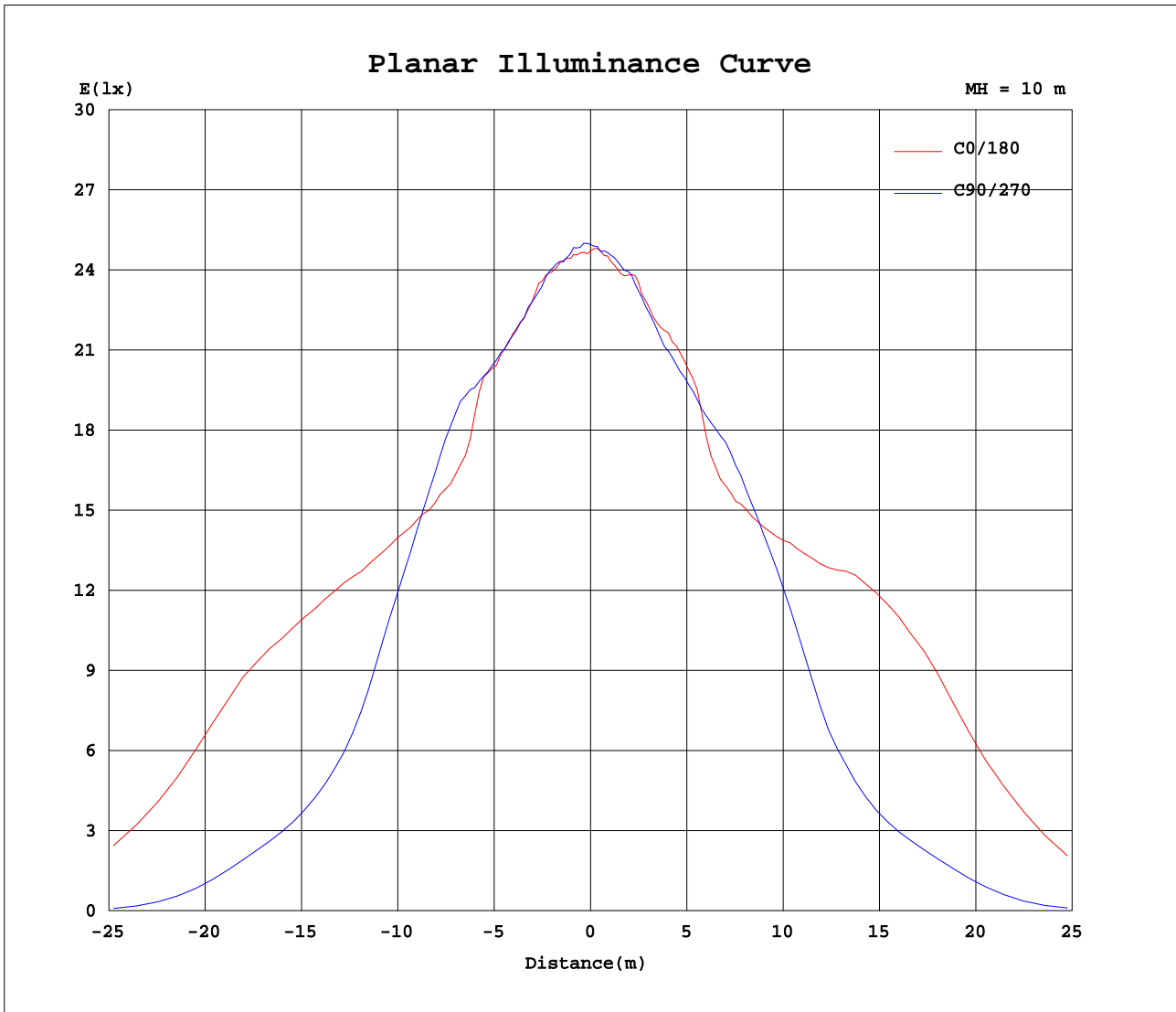
AvgL	cd/m2
L_0~180(65)av	93157
L_0~180(75)av	2262
L_0~180(85)av	38647
L_90~270(65)av	11215
L_90~270(75)av	2325
L_90~270(85)av	3881
L_45(65)av	16324
L_45(75)av	1815
L_45(85)av	3508

Standard: GB/T 29293-2012

C Range: 0 - 360DEG
 C Interval: 22.5DEG
 Test Speed: HIGH
 Temperature:25.2DEG
 Operators:Teddy
 Test Date:2015-08-26

γ Range: 0 - 180DEG
 γ Interval: 1.0DEG
 Test System:EVERFINE GO-R5000_V2 SYSTEM V2.0.352
 Humidity:65%
 Test Distance:26.000m [K=1.2918]
 Remarks: N/A

Planar Illuminance Curve



C Range: 0 - 360DEG
C Interval: 22.5DEG
Test Speed: HIGH
Temperature: 25.2DEG
Operators: Teddy
Test Date: 2015-08-26

γ Range: 0 - 180DEG
 γ Interval: 1.0DEG
Test System: EVERFINE GO-R5000_V2 SYSTEM V2.0.352
Humidity: 65%
Test Distance: 26.000m [K=1.2918]
Remarks: N/A

LUMINOUS DISTRIBUTION INTENSITY DATA

Test:U:219.5V I:0.6480A P:141.4W PF:0.9944 Freq:50.00Hz Lamp Flux:12313x1 lm		
NAME: LED High Bay Light(D2)	TYPE:LED	WEIGHT:N/A
SPEC.:N/A	DIM.: 0.397*0.411*0.096	SERIAL No.:1508260002
MFR.: Chengdu Senlu Electric Co., Ltd	SUR.:0.397*0.411	Shielding Angle:N/A

Table--1

UNIT: cd

C(DEG) γ (DEG)	0	22.5	45	67.5	90	112.5	135	157.5	180	202.5	225	247.5	270	292.5	315	337.5			
0	2472	2492	2494	2495	2495	2487	2466	2463	2472	2492	2494	2495	2495	2487	2466	2463			
5	2486	2475	2495	2509	2513	2515	2499	2490	2481	2496	2494	2545	2494	2483	2467	2479			
10	2524	2496	2506	2532	2537	2587	2576	2537	2490	2503	2511	2540	2511	2539	2519	2519			
15	2609	2539	2529	2577	2574	2644	2633	2585	2560	2540	2537	2542	2547	2588	2576	2606			
20	2657	2574	2569	2623	2655	2750	2690	2645	2633	2574	2572	2574	2585	2667	2616	2636			
25	2797	2662	2635	2757	2806	2896	2800	2803	2806	2672	2657	2629	2711	2803	2722	2723			
30	2994	2771	2782	2960	3054	3034	2912	2923	2871	2806	2685	2799	2893	2959	2897	2903			
35	2974	2843	2947	3163	3390	3213	3075	2981	2899	2910	2841	3021	3194	3174	3047	2899			
40	3336	3132	3069	3255	3489	3338	3199	3323	3282	3199	3042	3244	3382	3321	3174	3160			
45	3956	3502	3060	3198	3374	3198	3214	3779	3923	3603	3122	3196	3418	3251	3228	3581			
50	4783	3896	2792	2686	2804	2582	2907	4387	4894	4115	2834	2708	2896	2658	3080	4179			
55	6000	4204	2275	2078	2254	1994	2353	4917	6486	4715	2200	2017	2264	2075	2511	4729			
60	7453	4647	1765	1618	1816	1611	1894	5575	7776	5010	1707	1612	1825	1624	1974	5447			
65	6642	3858	1029	718	736	674	1116	3845	6193	3443	1010	719	809	841	1344	4315			
70	3055	1436	187	102	110	107	110	1045	2235	1020	130	104	104	110	204	1571			
75	95.8	102	82.2	109	99.4	123	71.0	96.2	95.1	98.0	77.2	109	96.7	124	75.8	104			
80	279	85.8	67.9	101	81.0	102	60.0	81.0	367	75.8	65.6	99.3	79.5	111	61.9	94.5			
85	547	52.0	56.6	63.7	56.7	63.0	42.4	47.5	551	41.8	54.8	61.8	53.5	73.0	45.5	58.1			
90	191	12.6	30.6	15.1	7.19	9.18	9.21	7.29	32.4	9.21	15.4	10.3	7.30	30.0	22.6	11.9			
95	1.32	0.58	0.57	0.87	0.86	0.89	0.40	0.74	2.46	1.20	0.86	0.82	0.63	9.08	0.77	1.90			
100	1.94	1.14	0.54	0.52	0.52	0.49	0.43	0.94	5.87	3.03	1.24	1.27	1.32	1.23	2.05	4.85			
105	4.45	2.33	0.50	0.73	0.65	0.54	1.02	2.95	9.96	5.82	2.68	3.09	2.82	2.14	3.39	8.50			
110	6.85	4.16	1.00	0.97	1.12	0.84	1.98	4.71	11.3	7.46	4.36	3.35	3.71	3.17	4.60	9.96			
115	8.00	5.42	1.99	1.33	1.74	1.35	3.00	6.10	11.2	8.13	5.90	4.36	4.46	3.40	5.37	10.0			
120	9.06	6.31	3.11	2.21	2.57	2.33	3.40	6.58	10.9	8.20	6.17	7.33	5.65	5.37	6.23	9.87			
125	9.80	7.06	3.86	3.28	3.76	3.36	3.70	6.62	9.26	7.51	5.97	7.33	6.13	6.72	6.09	8.87			
130	9.31	6.70	4.13	4.97	5.01	4.96	4.66	5.87	7.87	6.05	5.69	7.33	6.28	6.89	5.36	7.68			
135	8.02	6.00	4.33	6.57	6.83	6.14	5.17	5.30	6.29	5.30	5.49	6.50	6.08	6.85	5.22	6.16			
140	6.60	5.48	4.35	6.91	6.72	6.18	4.79	5.16	5.38	5.24	6.10	5.94	6.02	6.40	5.18	5.37			
145	5.75	5.43	4.91	6.76	6.35	5.49	4.36	4.91	5.28	5.11	6.03	5.38	5.94	6.30	5.33	4.78			
150	5.11	4.42	6.71	5.56	5.96	5.11	4.35	4.28	5.04	4.48	5.35	5.44	5.83	6.20	5.39	3.96			
155	4.60	4.22	7.01	4.86	5.08	4.72	4.41	4.18	4.27	4.29	5.22	5.56	4.64	5.68	5.24	3.85			
160	4.33	4.16	5.98	4.42	4.67	4.59	4.22	4.12	4.32	4.29	5.04	6.44	4.38	5.08	5.18	3.90			
165	4.28	4.10	4.23	4.36	4.45	4.20	4.14	4.09	4.42	4.48	5.16	7.20	4.36	5.05	5.18	4.47			
170	4.40	4.35	4.70	4.40	4.95	4.91	4.60	4.21	4.44	4.80	5.19	7.29	4.35	5.31	5.58	4.97			
175	5.03	5.11	6.34	4.64	5.27	5.30	4.81	4.72	4.46	4.99	5.22	7.31	4.33	5.49	5.49	4.97			
180	5.04	5.48	7.34	4.74	5.39	5.30	5.04	5.16	4.47	5.18	5.23	7.33	4.77	5.56	5.24	4.91			

C Range: 0 - 360DEG
 C Interval: 22.5DEG
 Test Speed: HIGH
 Temperature:25.2DEG
 Operators:Teddy
 Test Date:2015-08-26

γ Range: 0 - 180DEG
 γ Interval: 1.0DEG
 Test System:EVERFINE GO-R5000_V2 SYSTEM V2.0.352
 Humidity:65%
 Test Distance:26.000m [K=1.2918]
 Remarks: N/A